

Table Post Brass or Steel

Table Guide 1018 Steel

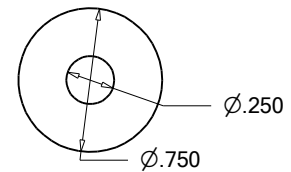
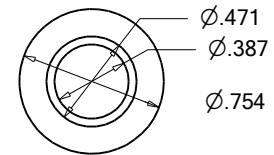
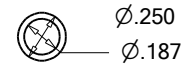
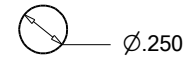
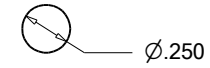
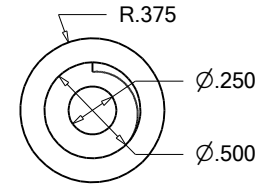
Balance Rod 1018 Steel

Elevation Push Rod 1/4-20 Brass

Thumb Screw 10-32 Brass

Shoulder Bolt 10mm thread or custom turned.

Counter Balance Brass or Steel



Note: Both elevation pushrod and balance rod are threaded 1/4-20 for 1/2" long on one end each.

Misc parts for the Sensitive or precision drilling table.
11/17/2024
JR