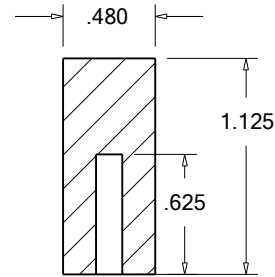
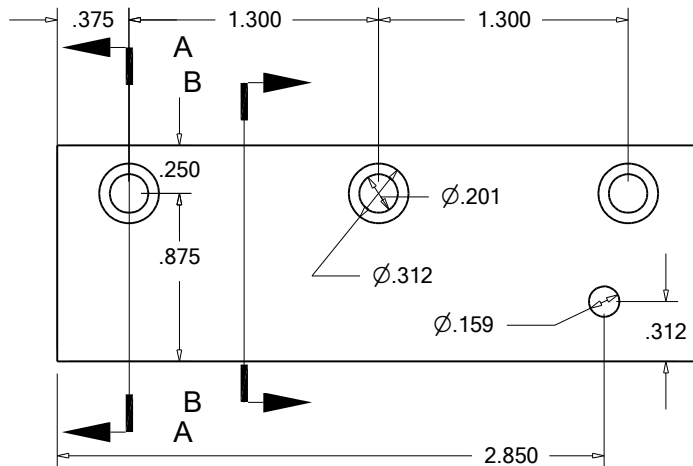
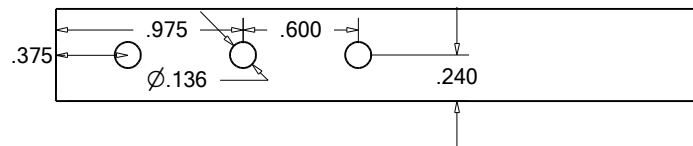


Section A-A



Section B-B



Tool Holder Mount 1018 Steel .5 x 1.125 x 3.350 Blank.
 Drilled .136 for 8-32 allen cap screws in 3 places.
 Drilled and Counter Bored for 10-32 allen cap screws 3 places..
 Drill and Tap thru one place .159 for 10-32 pivot Screw.