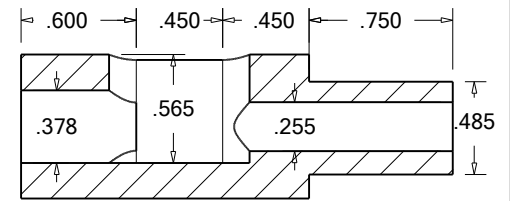
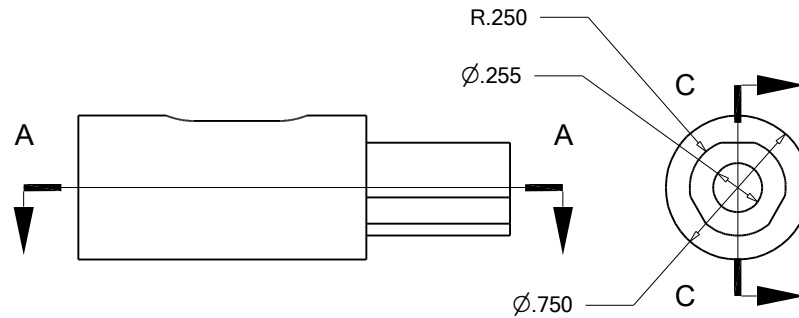
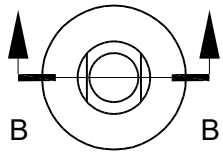
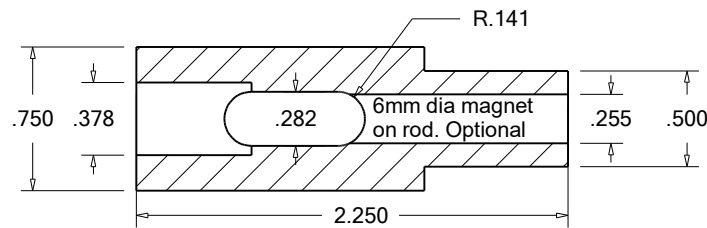


Section B-B



Section C-C



Section A-A

The magnet (Not Shown) will help retain the tap. It can be mounted on a .250 diameter rod and the rod length cut to bring the tap into registration with the slot end so the back end of the tap will rest on the magnet. Magnets are optional.

TapHolder
3/8-16 Tap Holder
11/22/2024 JR