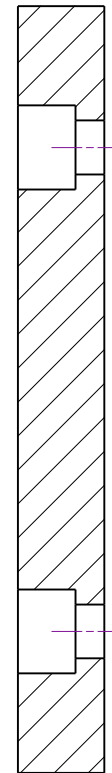
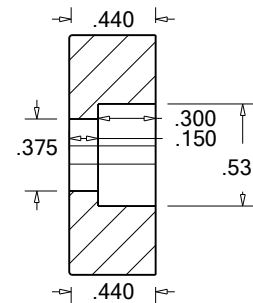
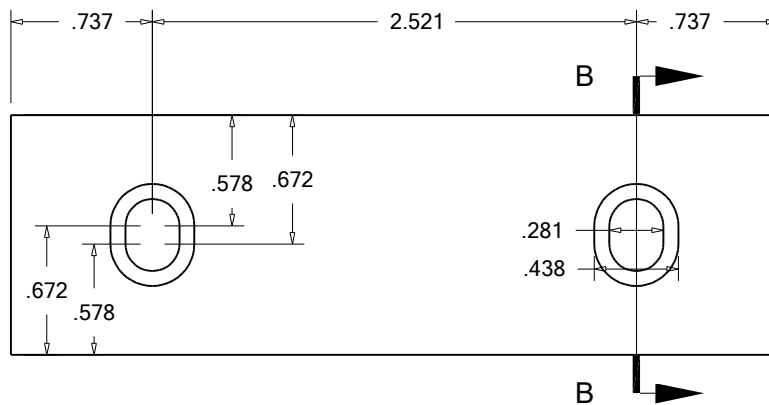


Original jaws were not symmetrical. They could not be reversed. I preferred jaws that could be used on each edge. With this symmetry it is possible to have two configurations. The mounting holes and counter bores were adjusted so the jaws will now be useable on either edge.

Steel for hard jaws or aluminum for soft jaws.  
Make 2 each.  
Chamfer of .010 is optional.



Section A-A



Section B-B

