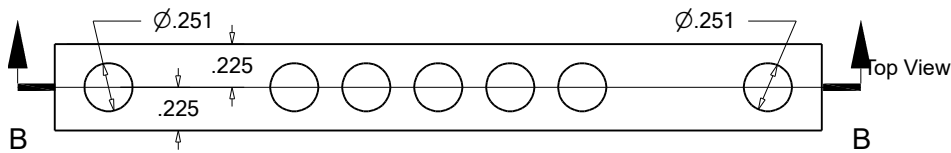
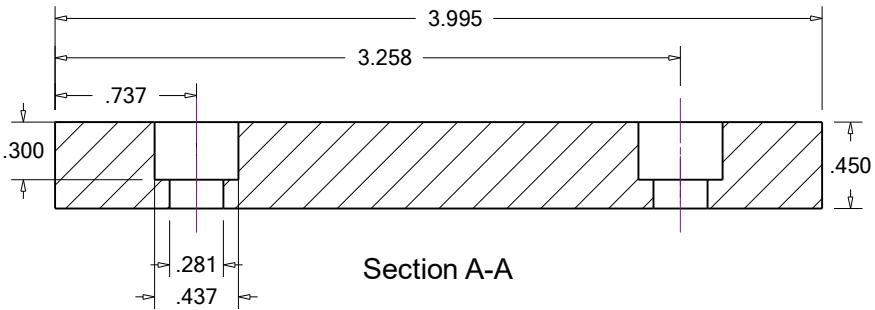


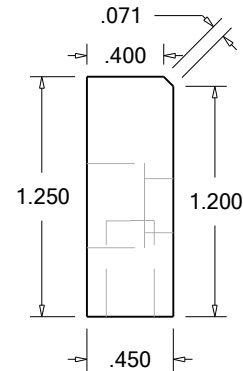
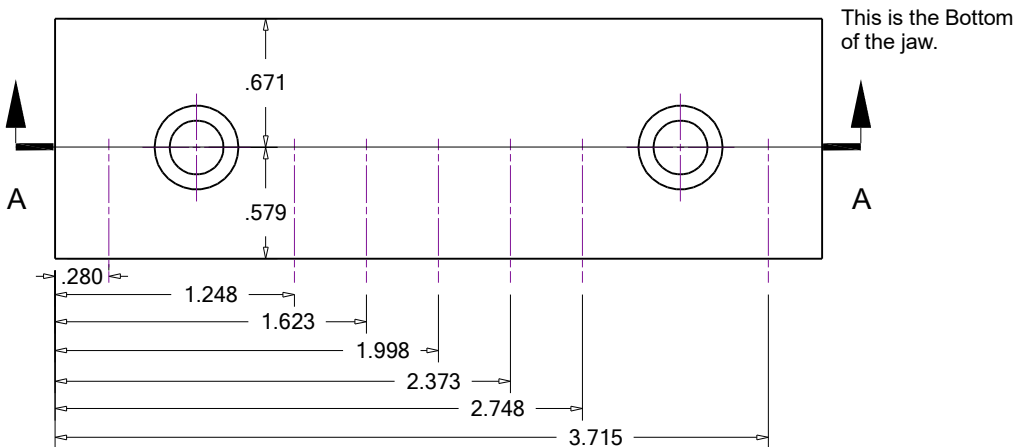
Section B-B



Total of 7 .251 holes in the top surface of each jaw. .251 holes are first drilled to .246 (Letter D) drill. Then reamed to .251. This provides a slip fit for .250 hardened steel pins. Four pins of about .750 length should do for most applications.



Section A-A



These Dimensions fit my Import Kurt Style 4" milling lockdown vise.

Chamfer corner is the bottom of each Jaw. It is positioned against either the fixed jaw or the moveable jaw.

Use a good quality steel ground and hardened for vise jaw use. The pins will allow clamping on unequal edges of various sizes. Works well for round stock also, not just for odd shapes.

Kurt Type 4" vise	
Vise Jaw Pined	
01/01/2025	JR